

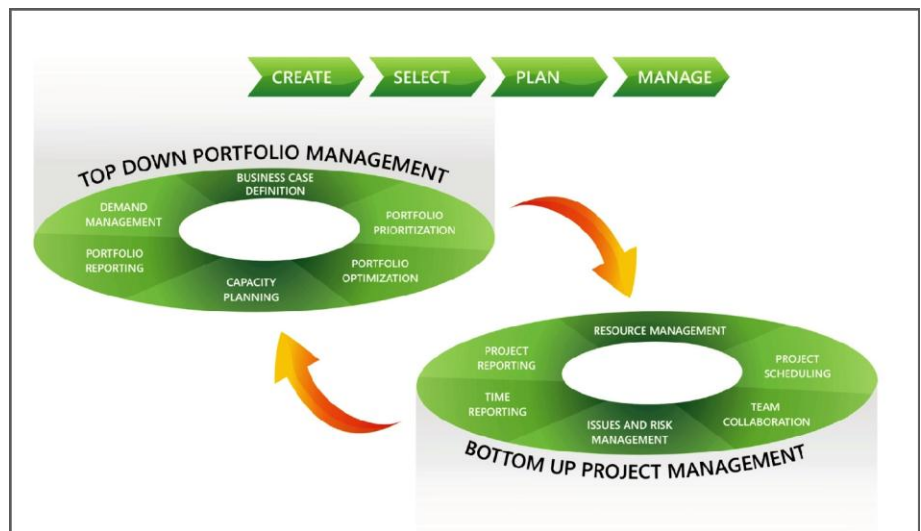
What's New in Project Server 2010

Microsoft Project Server 2010 brings together the business collaboration platform services of Microsoft® SharePoint Server 2010 with structured execution capabilities to provide flexible work management solutions. Project Server 2010 unifies project and portfolio management to help organizations align resources and investments with business priorities, gain control across all types of work, and visualize performance through powerful dashboards.

Unified Project & Portfolio Management (PPM)

In Project 2010, the best-of-breed portfolio management techniques of Microsoft Office Project Portfolio Server 2007 are included in Project Server 2010, providing a single server with end-to-end project and portfolio management (PPM) capabilities.

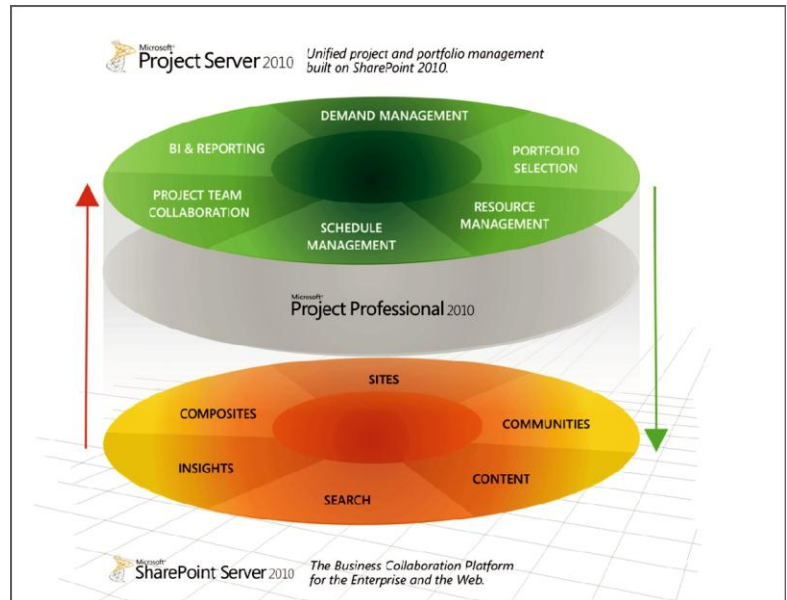
- Familiar SharePoint user interface throughout the solution.
- Common data store eliminating the need for the Project Server Gateway.
- Intuitive and simplified administration.
- Localized portfolio selection capabilities.
- Comprehensive Application Programming Interface (API) including both project and portfolio capabilities.



Built on SharePoint Server 2010

Project Server 2010 is built on top of SharePoint Server 2010, bringing together the powerful business collaboration platform services and structured execution capabilities to provide flexible work management solutions. Gain additional value from the Microsoft platform.

- Take advantage of the Business Intelligence platform to easily create reports and powerful dashboards.
- Control document review and approval through workflow.
- Enterprise search makes it easy to find people and effectively mine project data (resources, tasks, documents etc.).
- Connect teams and enhance communication with wikis, blogs, discussion forums and My Sites.



Project Initiation & Business Case Development

Project Server 2010 provides a new demand management module to capture all work from simple tasks to complex projects and programs.

- Develop and deploy effective governance workflows to manage project investments throughout their lifecycle and drive accountability and control.
- Define Enterprise Project Types for all requests and associate with workflow, a project plan and a custom workspace template.
- Standardize data collection through configurable business case forms. Capture project information, cost estimates, resource estimates, strategic alignment assessments and more.
- Display relevant Enterprise Project Types for each line of business using departmental fields.

| Stage | State | Entry Date | Completion Date | Status Info |
|--------------------------|---------------------------------|-------------------|-------------------|---|
| Phase: 1. Create | | | | |
| Rejected | Not Started | | | |
| Initial Proposal Details | Not Started | | | |
| Initiate Checkpoint | Completed | 8/13/2009 9:24 AM | 8/18/2009 7:43 AM | update:InitialApprovalStage2: Proposal has been approve |
| Define | In Progress (Waiting for Input) | 8/18/2009 7:43 AM | | One or more business driver impact ratings have not be |
| Phase: 2. Select | | | | |
| Select Checkpoint | Not Started | | | |
| Not Selected | Not Started | | | |
| Phase: 3. Plan | | | | |
| Scheduling | Not Started | | | |
| Phase: 4. Manage | | | | |
| Execution | Not Started | | | |

Portfolio Selection

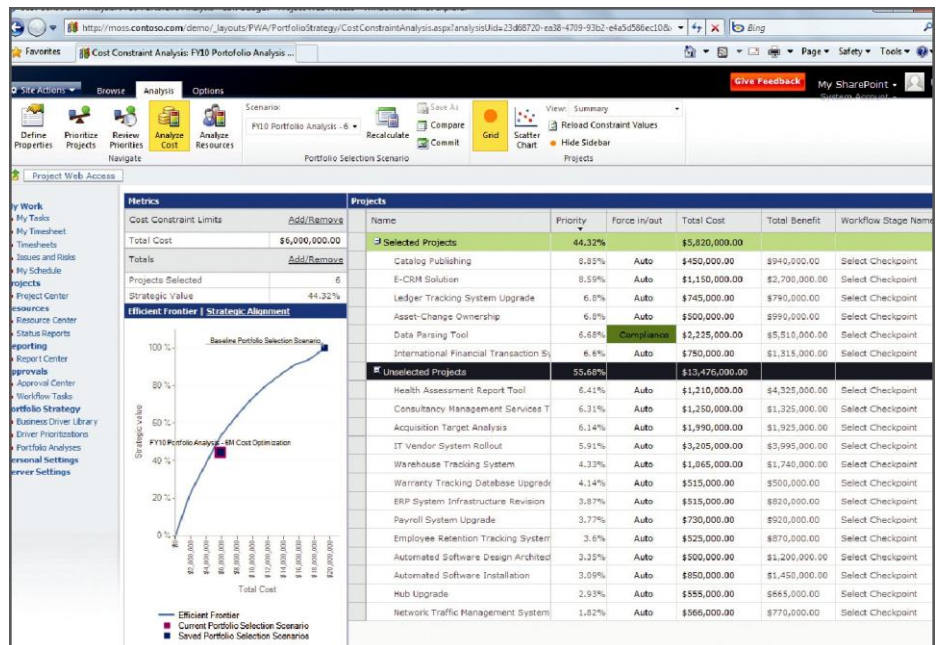
Project Server 2010 helps organizations select project portfolios that align with their business strategy by providing techniques to prioritize competing requests, run optimization scenarios under varying budgetary constraints and maximize resource utilization across the planning horizon.

Business Strategy Prioritization

- Objectively prioritize business drivers and drive consensus across the executive team.
- Intuitive and visual interface for completing the business driver prioritization assessment.

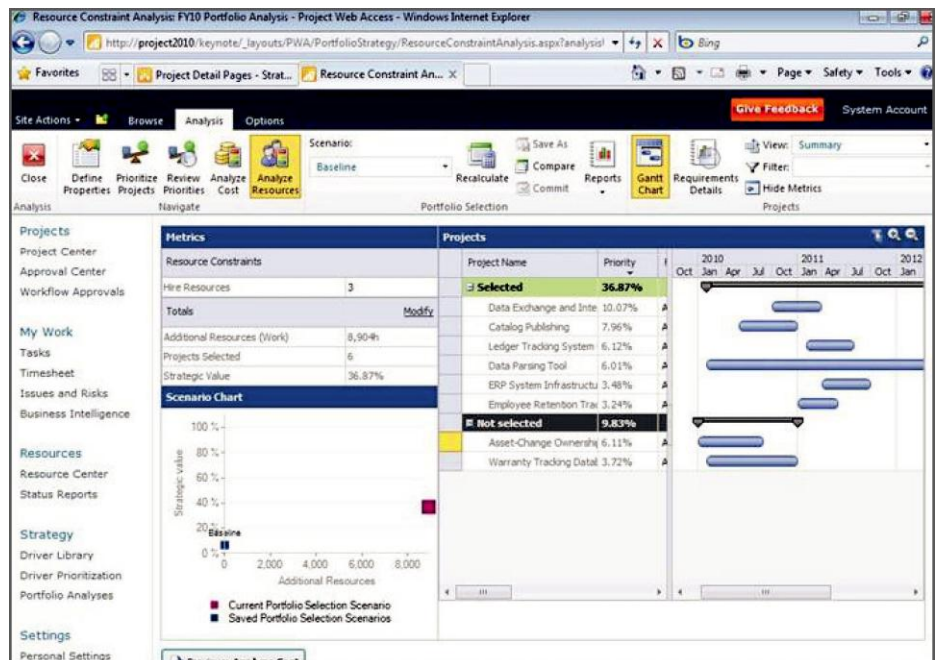
Portfolio Prioritization and Optimization

- Effectively prioritize projects from multiple dimensions – strategic value, financial value, and risk.
- Select the optimal portfolio of projects while meeting budgetary and other constraints.
- Enhanced optimization interface surfaces powerful analytical views (e.g. Efficient Frontier) to improve decision making.
- Better understand trade-offs with Force In/ Out descriptive values.
- Compare optimization scenarios side by side with snapshot scorecard.



Capacity Planning

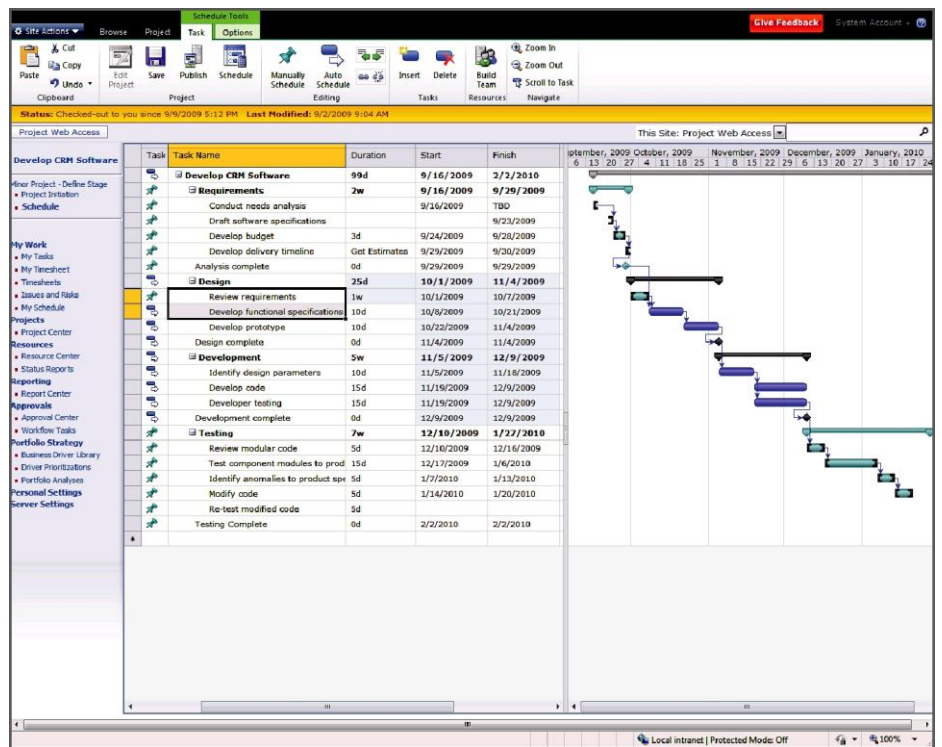
- Gain insight into generic resource demand and availability across the planning horizon.
- Reschedule projects within the horizon to maximize resource utilization while adhering to schedule dependencies.
- Model headcount decisions and compare scenarios.



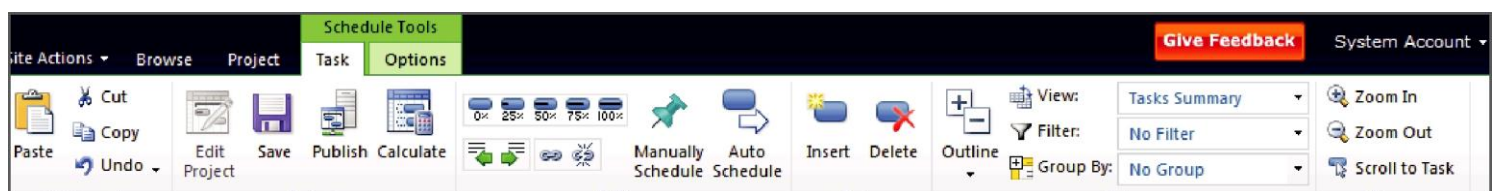
Web-Based Project Editing

Project Server 2010 brings the power of Project Professional 2010 to the browser with Web-based Project Editing.

- Easily build schedules online and conveniently make simple project edits from anywhere.
- Gain flexibility with user controlled scheduling – manually schedule tasks with the information you have right now or automatically schedule tasks to have Project calculate durations and dates.
- Create projects with more than 100 tasks, assign multiple resources, and easily define task hierarchy and dependencies.
- Gain insight with change highlighting and multi-level undo.



Fluent™ User Interface

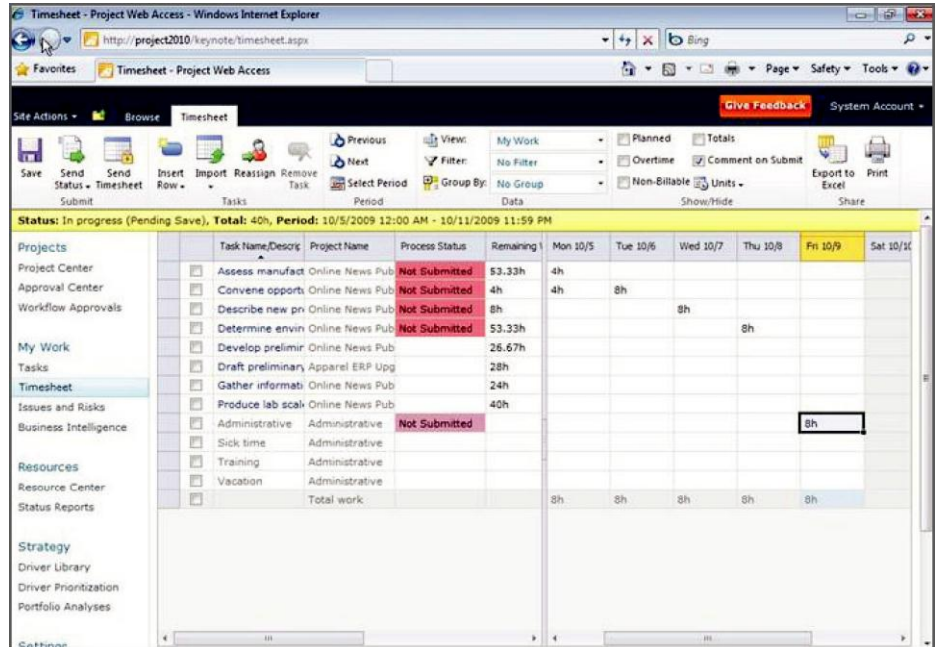


Microsoft Project 2010 delivers a consistent experience across Project Standard 2010, Project Professional 2010 and Project Server 2010 through the Fluent user interface.

- Work more efficiently with the simple and intuitive Ribbon, so the tools you need to plan and manage your project are always at your fingertips.
- Task oriented tabs and context sensitive menu groupings make finding and performing activities easier.
- Get started quickly with the consistent and familiar SharePoint 2010 based interface.

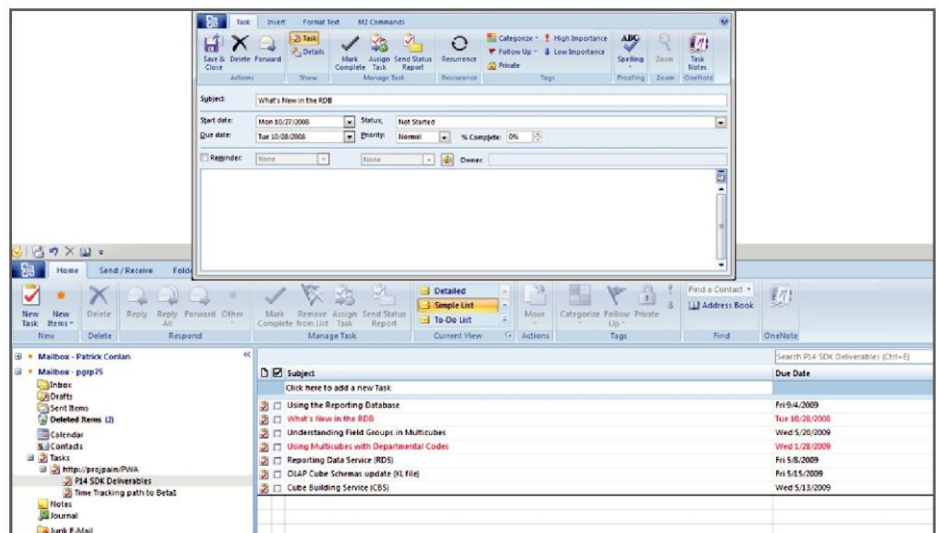
Time Reporting Enhancements

- Save time and unify task status updates and timesheet submissions by enabling Single Entry Mode.
- Flexible and consistent interface enhances the time reporting experience.
- Conveniently approve timesheet and task status updates through the consolidated Approval Center.
- Simply delegate approvals with enhanced user delegation.



Exchange Server Integration

- Choose to receive and update your project task status in Microsoft® Office Outlook.
- Project tasks are shown as Outlook tasks grouped by project name. No Outlook add-in required.
- Stay connected with notifications and updates through Outlook and Outlook Web App.



Enhanced Reporting and Business Intelligence (BI)

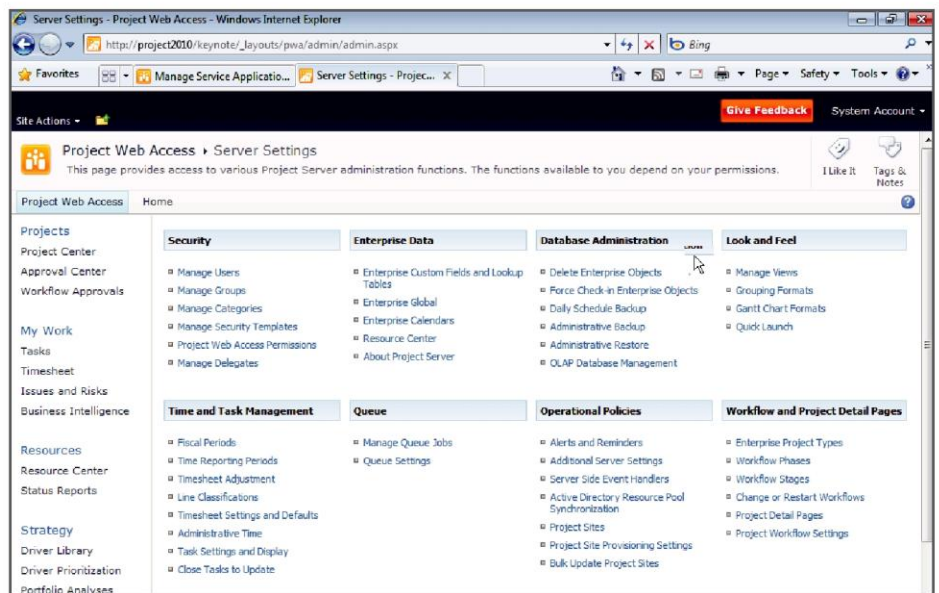
Experience the strength and depth of Microsoft Business Intelligence platform. Gain transparency and control with Excel Services, PerformancePoint Services, Visio Services, PowerPivot for Excel 2010 and SQL Reporting Services.

- Get started quickly with predefined best practice and localized report templates in the new Business Intelligence Center.
- Intuitively customize reports in a familiar Excel editor and publish through Excel Services.
- Simply create powerful audience-based dashboards to effectively monitor portfolio performance.
- Satisfy line of business reporting requirements with Departmental Cubes. Allow decision makers to focus on their data, eliminate unnecessary clutter and ensure faster cube build times.



Simplified Administration

- **Project Permissions** – Empower project managers to control who can view or edit their projects with Project Permissions.
- **User Delegation** – Enhanced delegation enables users to easily specify colleagues to act as their delegate when on vacation, without assistance from the administrator.
- **Departmental Fields** – Provide a level of autonomy while maintaining enterprise standardization and control. With Departmental Fields administrators can associate Enterprise Project Types, Resources and Custom Fields to specific departments, eliminating unnecessary clutter and allowing departments to focus on their data.



- **Centralized Administration** – One stop administration console for managing both project and portfolio management capabilities.
- **Administer Reporting Cubes** – Enhanced administration interface for displaying the status and managing available cubes. Quickly take action and intuitively add, edit, delete, copy and refresh cubes.

Extend Interoperability

Integration with related Microsoft technologies provides a familiar and connected work management platform. Empower teams to work in their preferred productivity tools and provide status updates to project stakeholders with minimal effort and administrative overhead.

- **Microsoft® Exchange Server** – Conveniently receive and update your project tasks in Outlook or Outlook Web App.
- **Microsoft® Visual Studio Team Foundation Server** – Seamlessly connect the worlds of application development and project and portfolio management.
- **SharePoint Server Sync** – Effortlessly improve productivity with bidirectional status updates between Project Professional 2010 and SharePoint.



Note: Project Server 2010 software and system requirements located at <http://www.microsoft.com/project/2010/>